

Date: \_\_\_\_\_

Name: \_\_\_\_\_

# Recycle at home

Activity For Reception



**Blue Bin  
Recycling**



**Black Bin  
Household  
Waste**

**Which of these things can be recycled and which cannot?**

With an adult's help, cut out each picture, and place them next to the correct bin or draw a line from each item to the correct place.



Plastic bottle



Crisp packet



Cardboard box



Nappy



Tin foil



Empty tissue roll



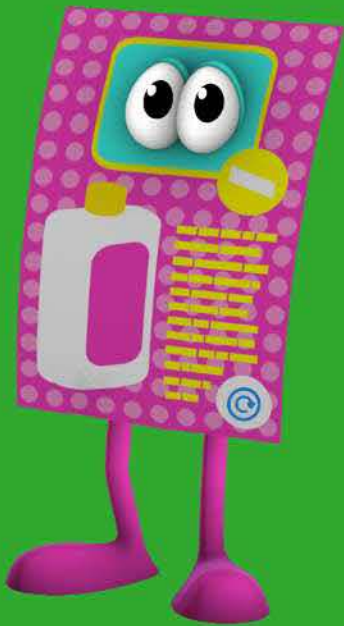
Plastic pouch



Drinks can

Scrunch, scrunch, scrunch  
the paper, throw them in  
the blue bin.

We can all help save the  
Earth, if we all pitch in.



Squash, squash, squash  
the cartons,  
throw them in the blue bin.

We can all help save the  
Earth, if we all pitch in.



## **THE RECYCLING SONG**

Same tune as row, row,  
row your boat



Wash, wash, wash the tins,  
throw them in the blue bin.

We can all help save the  
Earth, if we all pitch in.



Save, save, save the bottles.  
throw them in the blue bin.

We can all help save the  
Earth, if we all pitch in.